

The Thames – recovery from biological death

Alastair Driver, National Biodiversity Manager
Environment Agency, England

The Thames Catchment



Flooding and pestilence



EAST COAST FLOOD DISASTER

Over 150 Reported Dead

GREAT STORM SWEEPS
SEA INLAND

Many Thousands Evacuated

The death-roll in disastrous floods along the East Coast from Middlesbrough to the Thames yesterday had risen to over 150 early this morning and was still mounting.

Towns and villages were swept by high seas driven by the storms which, on the other side of the country on Saturday, overwhelmed the Stranraer-Larne ferry and caused the loss of 133 lives.

So far as is known deaths in the areas which suffered most severely



The remarkable recovery

- ➔ Good water quality increased from 53% in 1990 to 80% in 2008
- ➔ 125 species of fish
- ➔ Healthy breeding Otter population
- ➔ 400 habitat enhancement schemes since 2005
- ➔ 70km of river restored



Catchment sensitive farming – tackling rural diffuse pollution

Cherwell, Kennet, Loden and Roding catchments in the Thames Region



Jubilee River Flood Alleviation Scheme: delivering biodiversity gains through flood risk management

- ➡ 11 km of new river
- ➡ 5,500 homes and businesses protected



The London Rivers Action Plan (LRAP): bringing London's rivers back to life

- ➡ 58 projects planned
- ➡ 9 projects delivered
- ➡ 3 km restored so far
- ➡ 30 projects funded

THE LONDON RIVERS ACTION PLAN

A tool to help restore rivers for people and nature

Key aspirations:

By restoring the City's rivers, improve flood management, reduce the impact of climate change, reconnect people to the natural environment, gain better access for recreation and improved well-being, and enhance habitats for wildlife.

A linked website:

To provide an information resource in the form of a web-based map that highlights opportunities for restoring London's rivers in the Greater London Authority area.

www.therrc.co.uk/lrap.php

Who should use this guide:

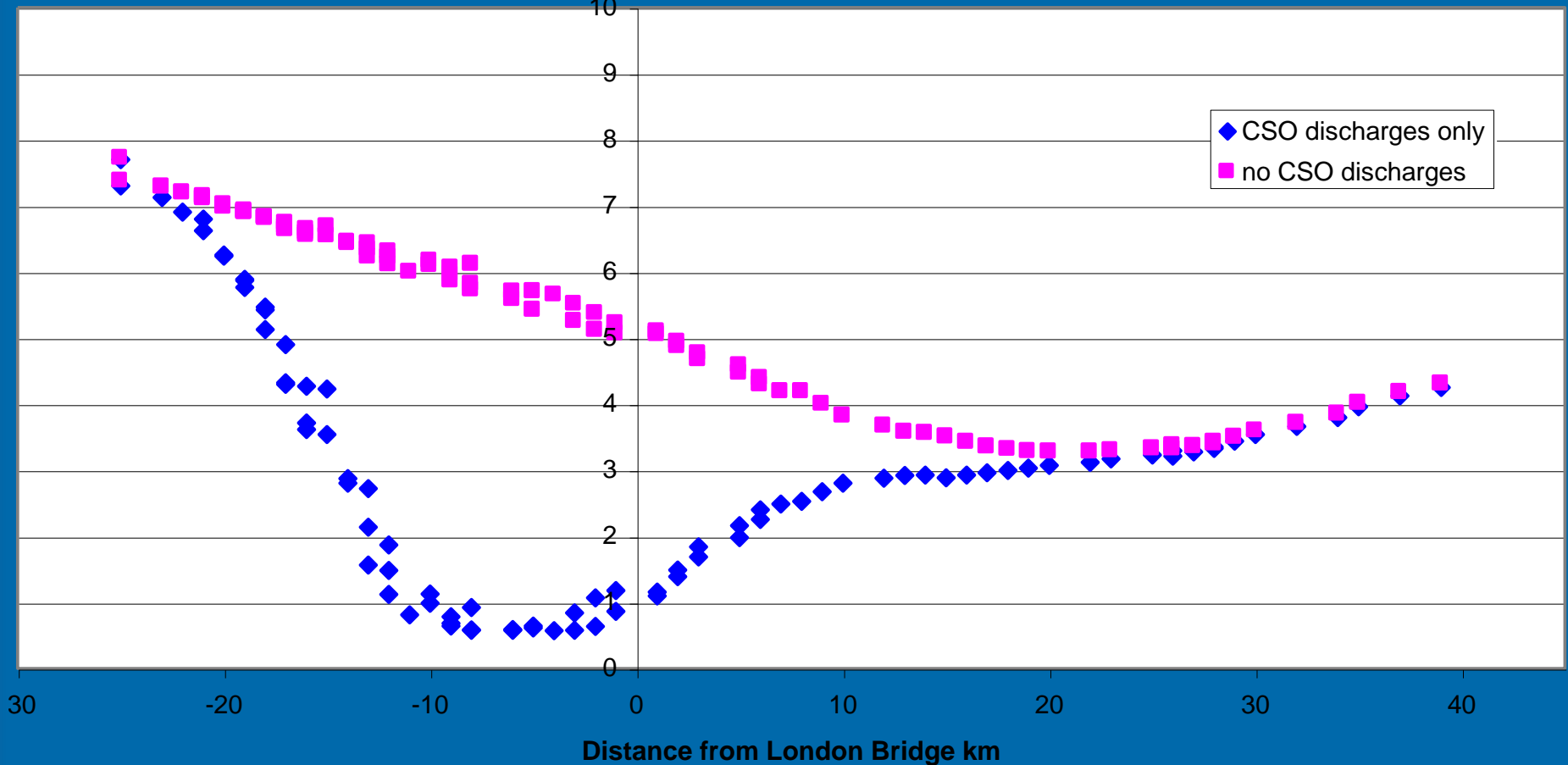
Anyone interested in improving the wildlife and amenity value of a river, especially community groups, local business, planners and developers.

LRAP - Sutcliffe Park

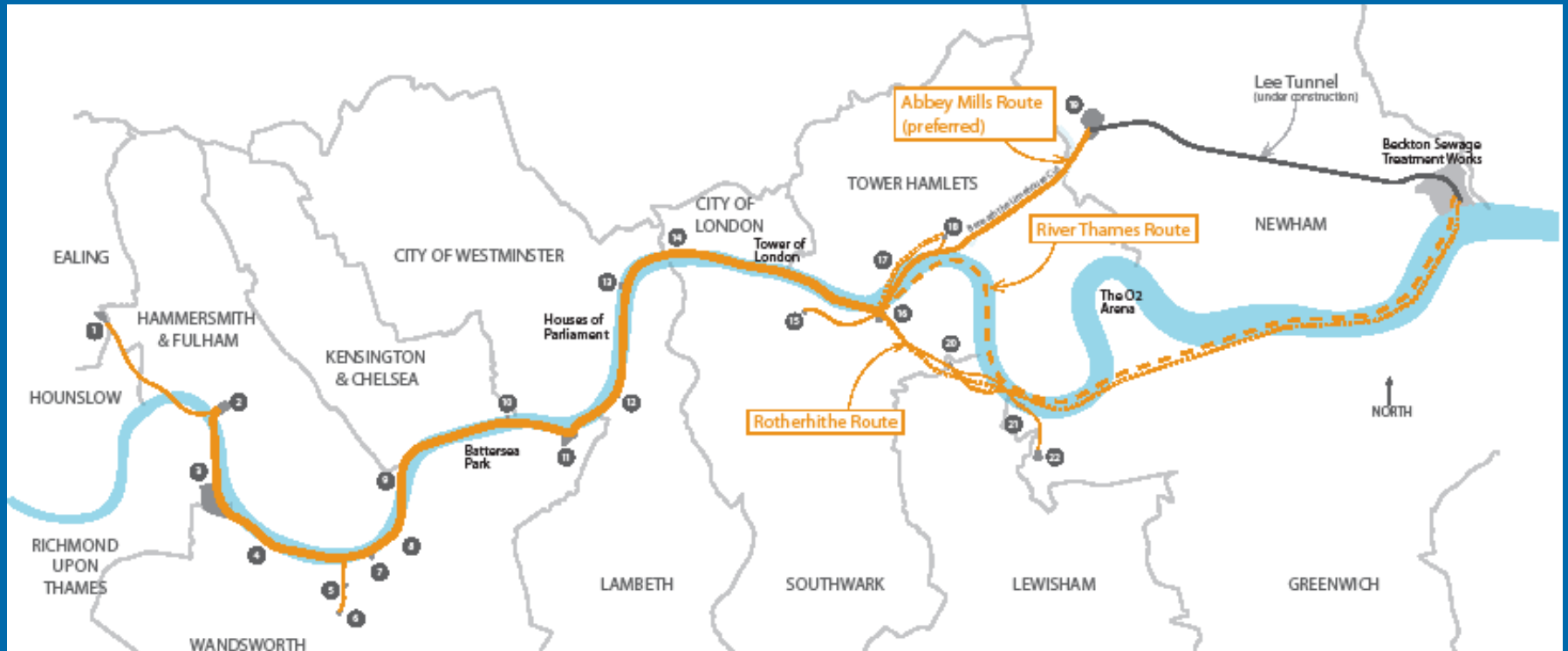


London Tideway Tunnels: tackling storm sewer overflows

13/08/1994 TideNo 8048 - Oxygen



London Tideway Tunnels: route options



Thames Estuary 2100 Plan: adapting to climate change



Protecting 1.25m people and £80bn+ of property value

And the winner is.....



Receiving the International Riverprize in Perth, October 2010



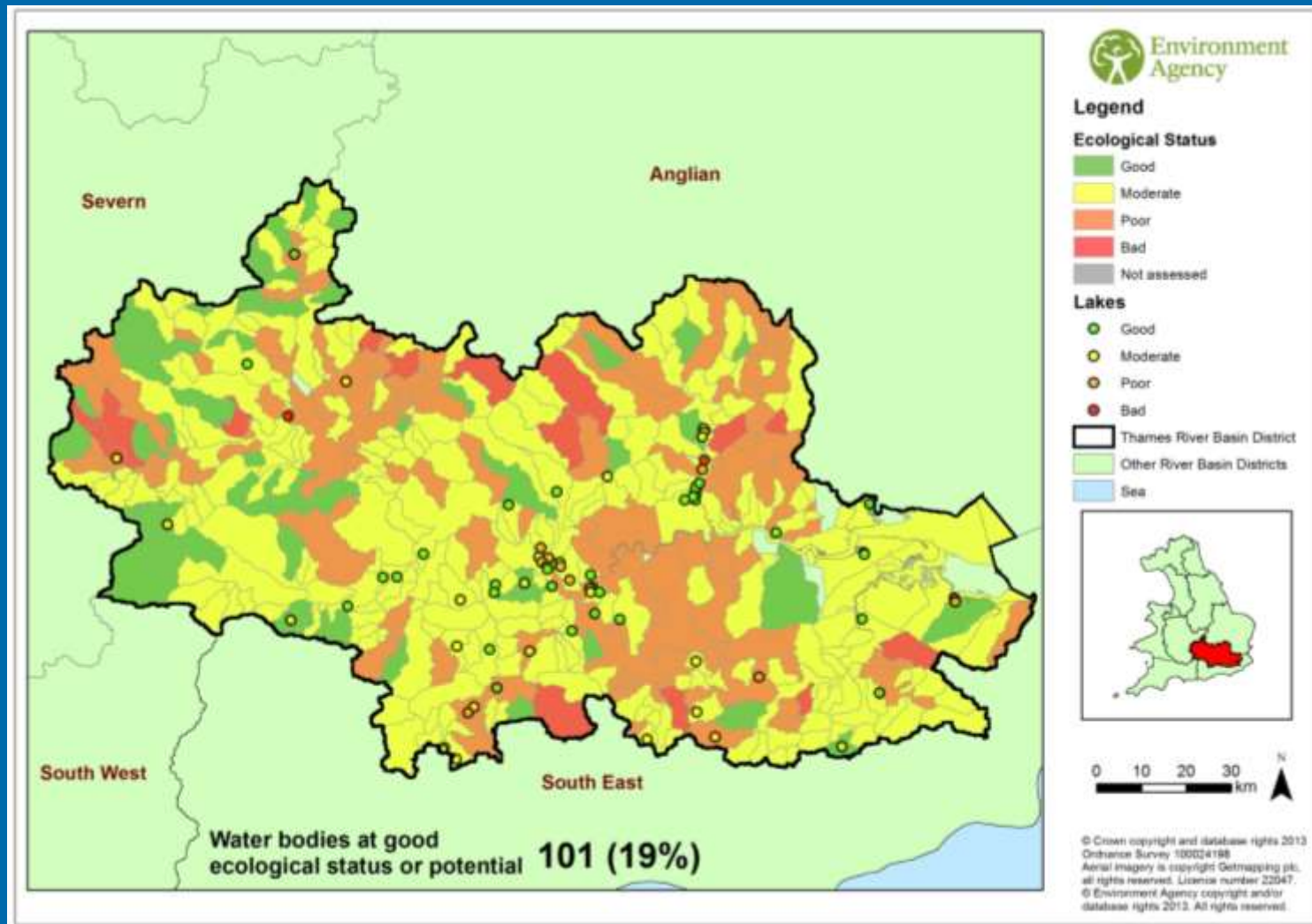
Celebrating with a representatives from a few partner organisations

Progress since 2010

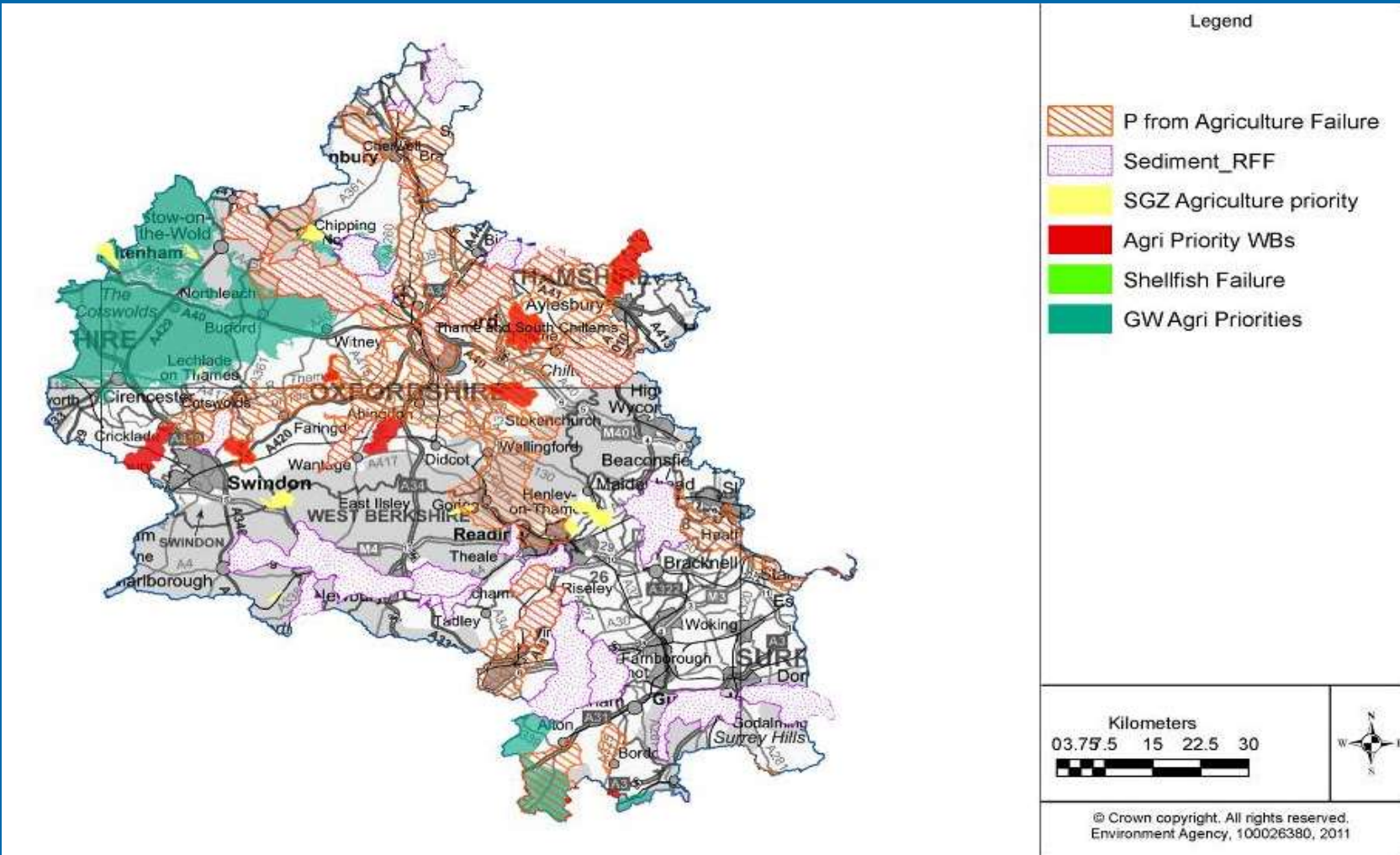
**Fobney Island
wetland creation
R. Kennet,
Reading**



Progress since 2010 - WFD



Catchment sensitive farming – post 2010



Jubilee River – post 2010



2003



2012



London Rivers Action Plan – post 2010



**River Ravensbourne at Ladywell Fields, South London –
reconnecting people with nature**

Thames Tunnels – post 2010

Drilling rig carrying out exploratory
work on the Thames



“Busy Lizzie” – the 7m
diameter tunnelling machine

Thames Estuary 2100 – post 2010



➡ Managing flood risk through London and the Thames estuary

So what happened to all that prize money?!!



Twinning Project -Yamuna River, India



Thankyou for your attention

